

Healing Hearts

Where No One Grieves Alone

121 Wisconsin Avenue
Waukesha, WI 53186
262-751-0874

www.healingheartsofwaukeshaco.org



WHAT DOES HEALING HEARTS PROVIDE?

Free, peer support groups for children, youth, and families who grieve a loss due to death, divorce, addiction, incarceration, deportation, or military deployment.





- Healing Hearts is a local, reputable, non-profit organization
- It has served grieving children and families for over 10 years
- Healing Hearts hosts a variety of peer grief support groups for all ages
- Group programs are structured, reliable, and led by trained facilitators
- All group programs are FREE of charge to attendees
- Healing Hearts provides outstanding opportunities to join in service together, and help others in need

HEALING HEARTS PEER GRIEF SUPPORT GROUPS



CHILDREN'S GROUPS

Children participate in structured, peer support groups with skilled and compassionate facilitators to help them heal after loss.



TEEN GROUPS

Teenagers gather in age-based groups with experienced leaders who guide them to learn, share, and grow through their grief journey.



YOUNG ADULT GROUPS

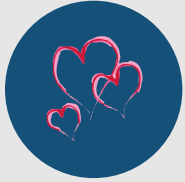
Young adults meet to share life experience and practice healthy grieving with peers and facilitators of their own generation.



ADULT GROUPS

Adults and parents come together to support each other through the challenges of grief with experienced group facilitators.

ADDITIONAL SERVICES



**GRANDPARENTS CARING FOR
GRANDCHILDREN GROUP**



**IN-SCHOOL PEER GRIEF
SUPPORT GROUPS**



GRIEF COMPANION MEETINGS



VOLUNTEER OPPORTUNITIES

- CO-FACILITATE A PEER GRIEF SUPPORT GROUP
- JOIN A COMMITTEE OR SPECIAL EVENT TEAM
- RAISE FUNDS IN THE COMMUNITY
- RAISE COMMUNITY AWARENESS
- MAKE REFERRALS





FAMILY EVENTS AND ACTIVITIES

- HEALING HEARTS SUMMER SOCIAL
- CELEBRATE ME FAMILY NIGHT
- THE ANNUAL CELEBRATION OF HOPE
- COMMUNITY AWARENESS EVENTS
- EDUCATIONAL PRESENTATIONS

ADDITIONAL OPPORTUNITIES

- GRAD STUDENT AND UNDERGRAD INTERNSHIPS
- THE YOUNG ADULT AMBASSADOR PROGRAM
- SUPPORTING PARTNER PARTICIPATION



FREQUENTLY ASKED QUESTIONS



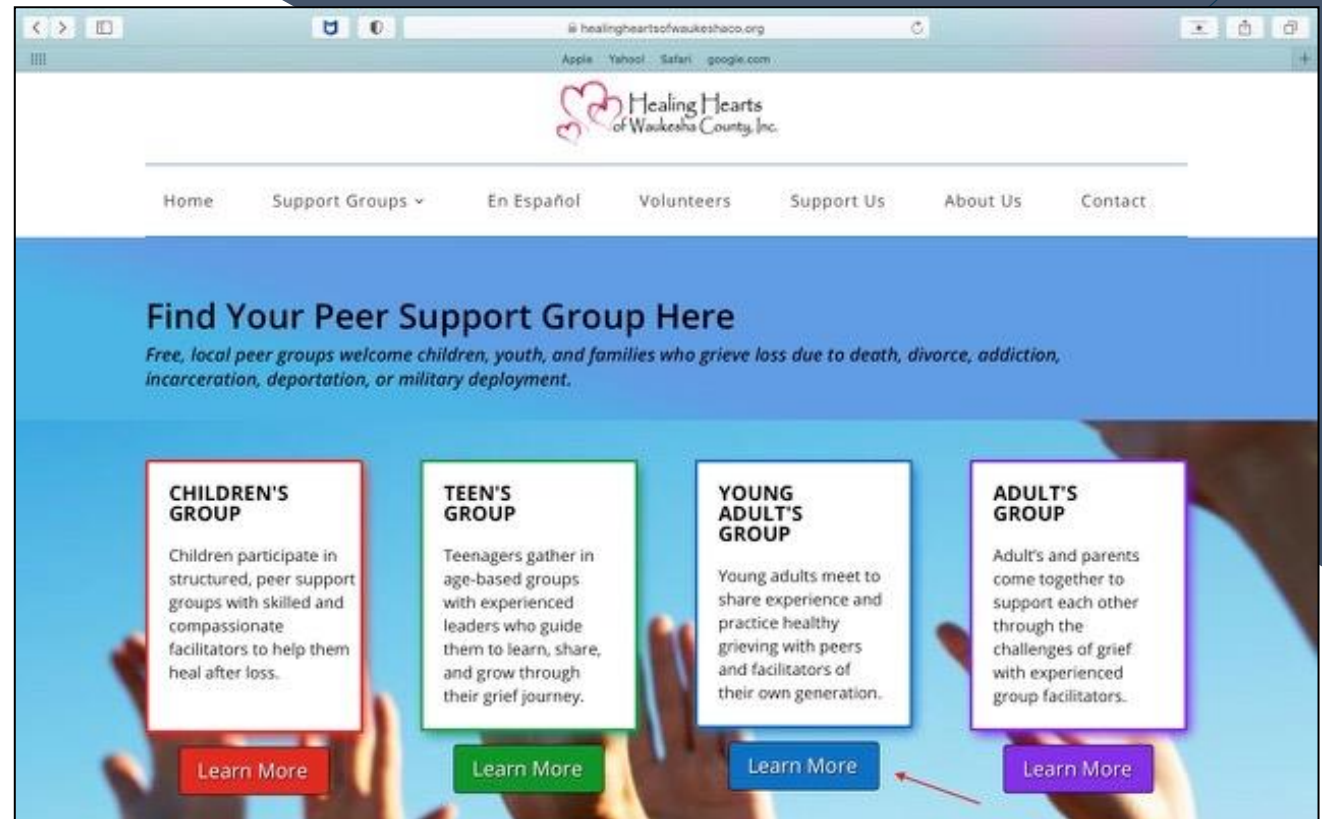
- **Is the group a big, formal thing?**
No. It's a very low pressure, comfortable setting.
- **Does I need to share a lot of detail if I don't want to?**
You can share as much or as little as you choose.
- **What if I can't attend every session?**
That's fine. You can come and go as you please.
- **Can I bring to the group a friend or family member?**
Absolutely. Just add their name to the Adult #2 section of the registration form.

How to Register for a Peer Support Group

1.) Go To:

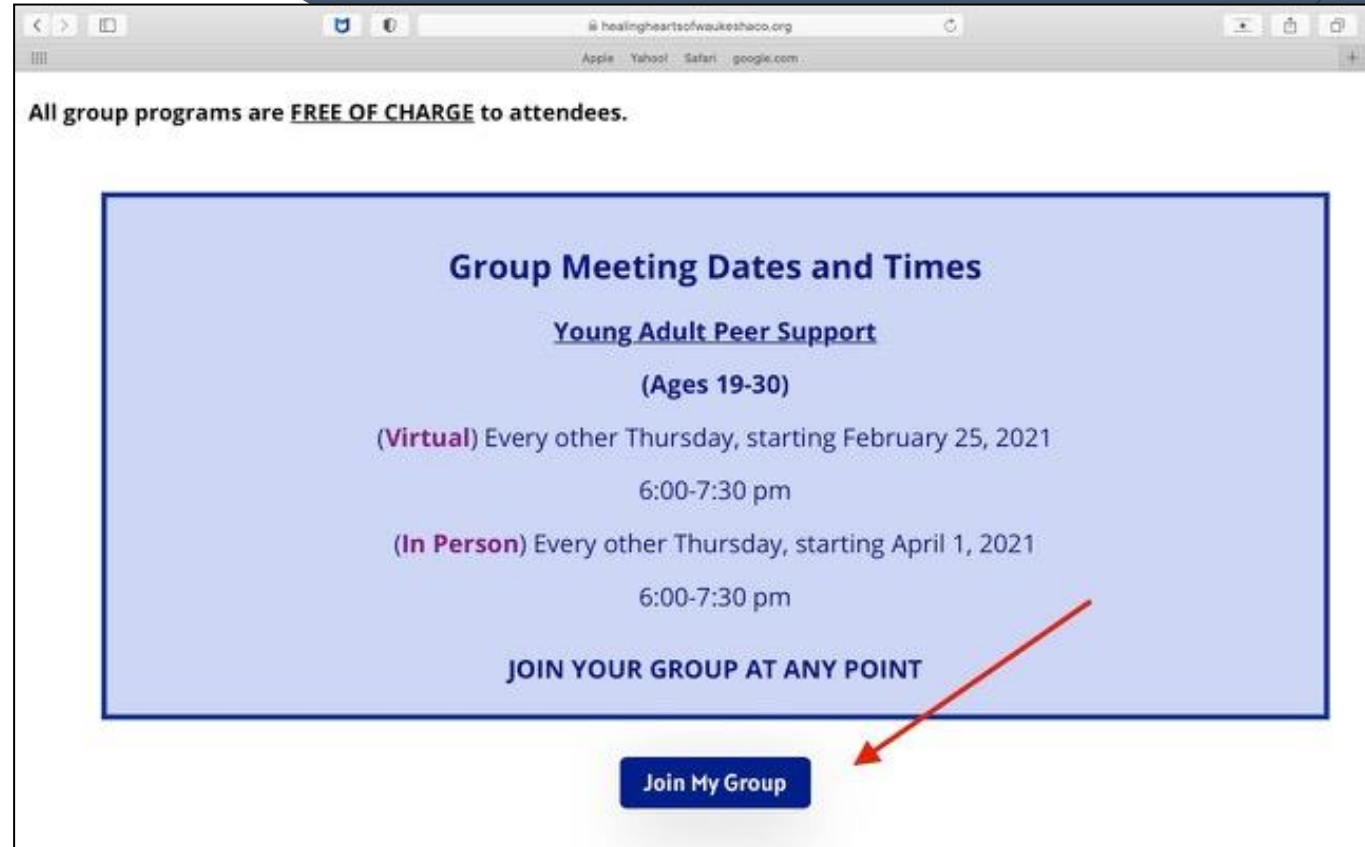
www.healingheartsofwaukeshaco.org

2.) Click **'Learn More'** under their group heading of interest.



How to Register for a Peer Support Group

3.) On the Young Adult Group page, scroll down to **'Join My Group'**




The screenshot shows a web browser window with the URL healingheartsofwaukesha.org. The page content includes:

- A statement: "All group programs are **FREE OF CHARGE** to attendees."
- A blue-bordered box containing:
 - Group Meeting Dates and Times**
 - Young Adult Peer Support**
 - (Ages 19-30)**
 - (Virtual)** Every other Thursday, starting February 25, 2021
6:00-7:30 pm
 - (In Person)** Every other Thursday, starting April 1, 2021
6:00-7:30 pm
 - JOIN YOUR GROUP AT ANY POINT**
- A blue button labeled "Join My Group" with a red arrow pointing to it from the right.

How to Register for a Peer Support Group

- 4.) Complete the simple registration form and press the **'Submit Registration'** button at the bottom of the page.
- 5.) **The participant will receive an email thanking them for registering** with simple directions on how to join their group session.



The screenshot shows a web browser window displaying the registration form for Healing Hearts of Waukesha County, Inc. The browser's address bar shows the URL <http://healingheartsofwaukesha.org>. The website's logo, featuring two hearts, is at the top center. A navigation menu includes links for Home, Support Groups, En Español, Volunteers, Support Us, About Us, and Contact. The main heading is "Peer Support Group Registration Form". The form is divided into two columns for "Adult #1" and "Adult #2". Each column contains input fields for First Name, Last Name, Phone, and Email. At the bottom of each column is a text area for "Reason for your interest in attending a Healing Hearts Peer Grief Support Group".



THANK YOU !

Healing Hearts of Waukesha

121 Wisconsin Ave. Waukesha, WI 53186



262-751-0874



INFO.HHWC@GMAIL.COM



WWW.HEALINGHEARTSOFWAUKESHACO.ORG

